



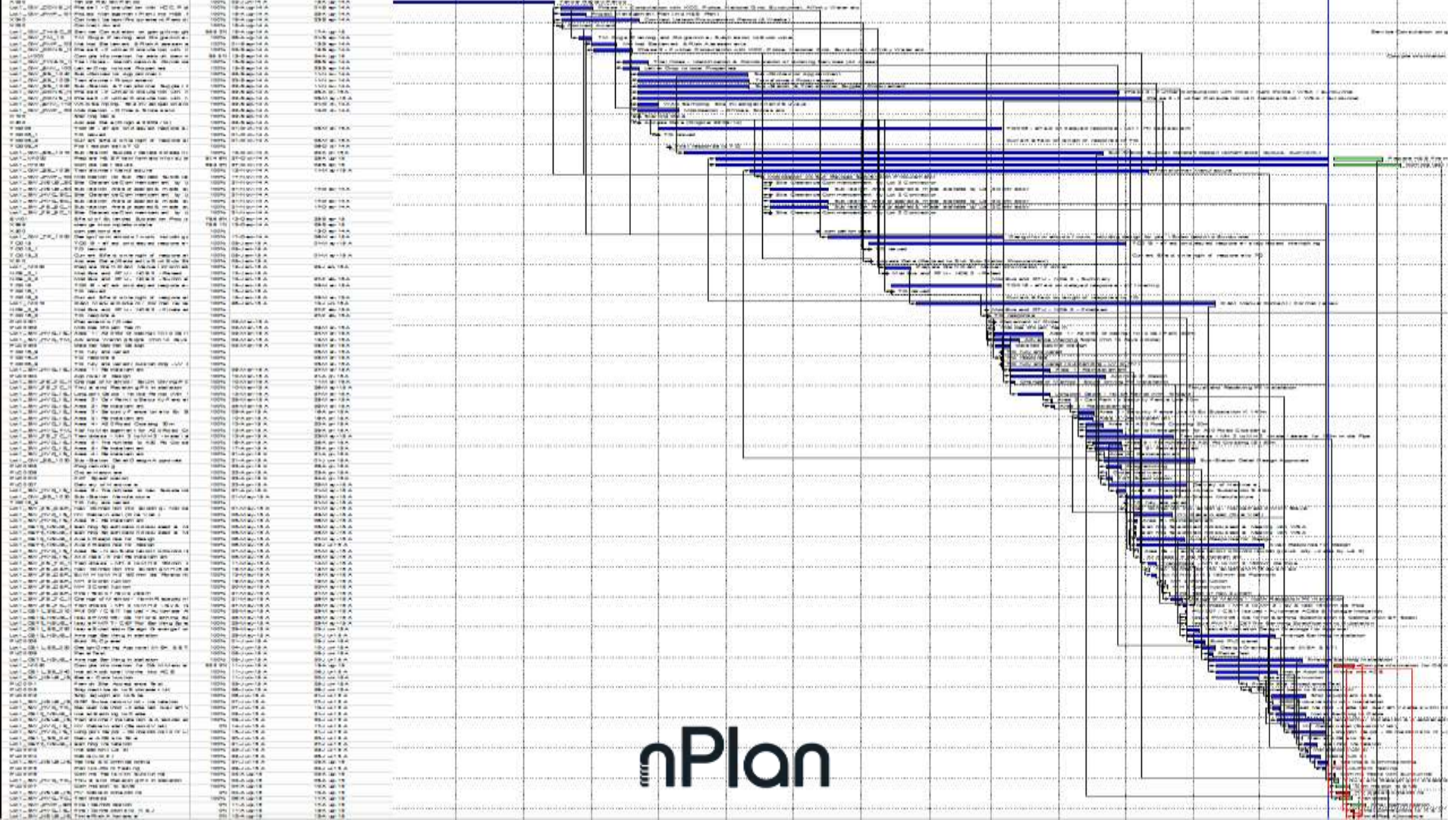
Algorithm-led Assurance of Projects

Dev Amratia, CEO

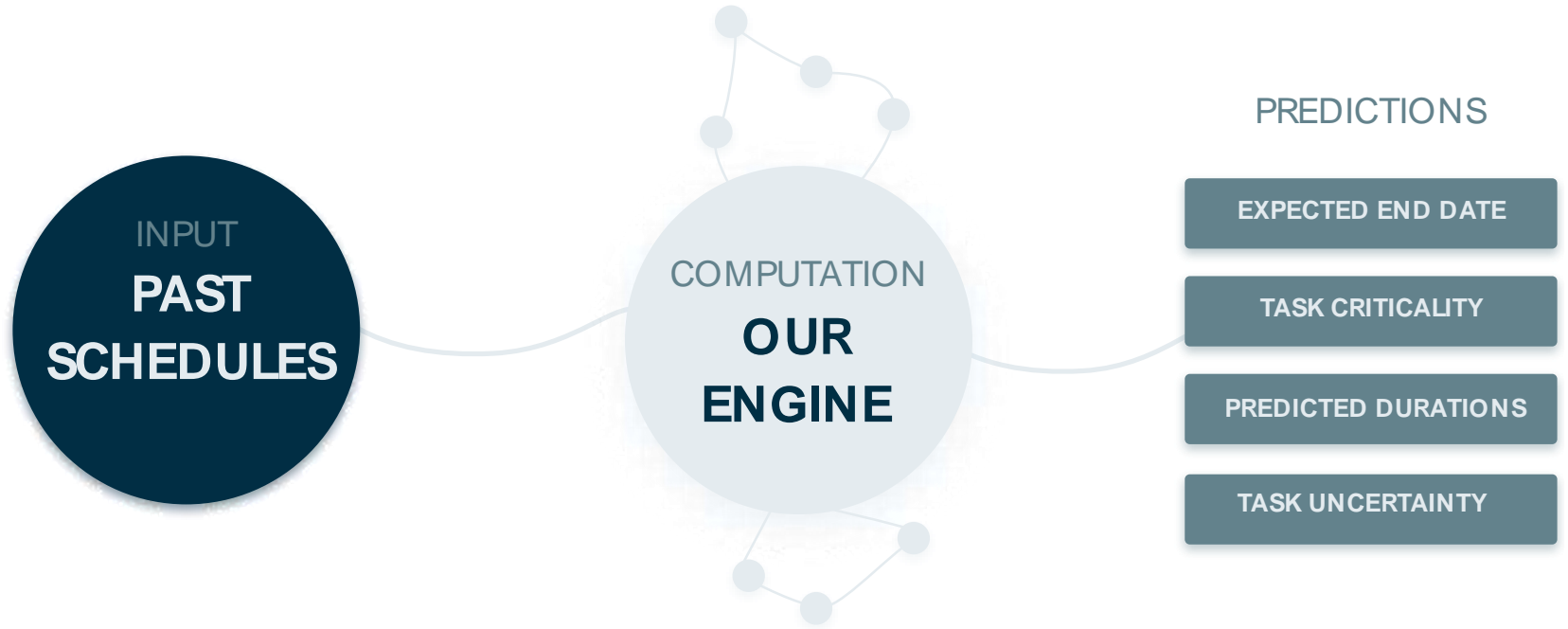
14th November 2019







nPlan



Our algorithms are underpinned by the largest dataset of construction schedules in the world (~250k schedules, worth ~\$550B)



**THE
EUROPAS**



EveningStandard.

Forbes

Innovate UK

nPlan



INTEGRATE
PREDICTIONS INTO
YOUR WORKFLOW

PLUGINS



Bentley

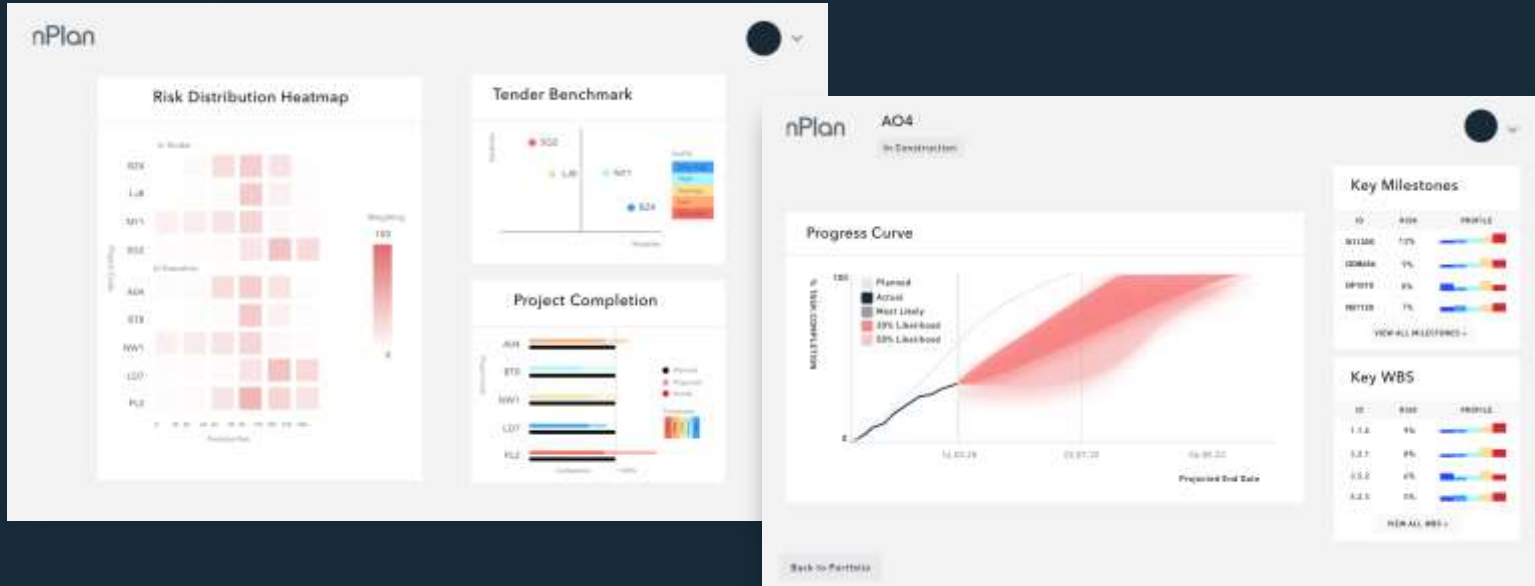


Power BI

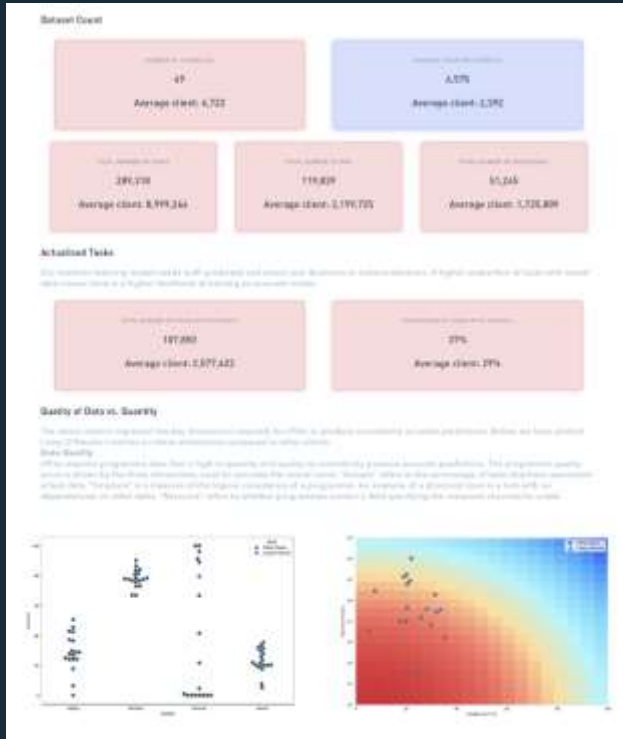
nPlan
MANAGED
SERVICE

nPlan

PRACTICAL INSIGHTS ON RISK AND UNCERTAINTY ACROSS PORTFOLIOS OF PROJECTS



REPORTING ON THE CERTAINTY AND CONFIDENCE



A FEW OF OUR PARTNERS

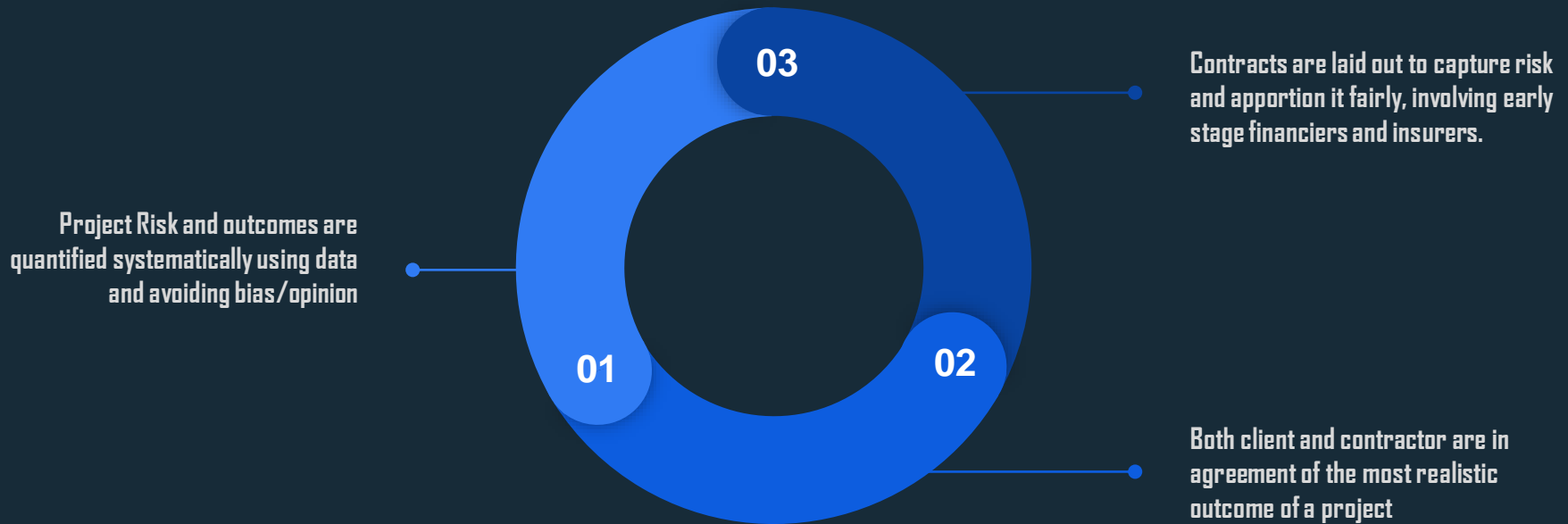


BUT DOES IT
ACTUALLY WORK?



BLIND TESTING USING REDACTED DATA

A NEW MODEL TO DELIVER CAPITAL PROJECTS



NPLAN DELIVERS VALUE BY IDENTIFYING POTENTIALLY “TOXIC” PROJECTS, ALLOWING YOU TO TAKE ACTION SOONER...



LOSS PREVENTION

Liquidated damages,
overheads and reputational
damage



PROTECT AGAINST ARBITRATION COSTS

Lengthy and expensive
legal disputes



SAVE OPPORTUNITY COSTS

Deploy human and financial
capital more effectively

... AND NPLAN PRODUCES BENCHMARKS FOR PROJECT PROGRAMMES, PROVIDING ASSURANCE OVER THE OUTCOME



PROJECT ASSURANCE

Data driven, third party validation differentiates your bids



CONTINGENCY OPTIMISATION

Measure risk, allocate contingency effectively



REDUCE REWORK

Rework is costly - deliver it right the first time.

dev@nplan.io

